

WELCOME

NEVER JUST STAY. STAY INSPIRED.

CONRAD®
PUNTA DE MITA



WELCOME TO CONRAD PUNTA DE MITA

A tranquil retreat with stunning views along the famed Riviera Nayarit, Conrad Punta de Mita is a contemporary architectural beauty surrounded by peaceful palm trees, abundant tropical blooms, and the brilliant turquoise waters of the Pacific Ocean. You can reconnect with yourself, immerse in nature, and enjoy the unspoiled landscapes, pristine coastal beauty, and idyllic weather of our refined Mexican oasis.

EXPERIENCE ABSOLUTE LUXURY

Simultaneously enthralling and calming, Conrad Punta de Mita offers a serene sanctuary set against the blissful backdrop of an inspiring tropical getaway and welcoming Mexican hospitality. Enjoy thoughtful, discerning care during your stay, with intuitive service tailored to every need. A welcome respite, our luxurious resort is just 45 minutes from Puerto Vallarta International Airport, with private transportation available for your convenience.





ACCOMMODATIONS

Spacious, sun-filled guest rooms feature airy coastal décor, authentic indigenous artwork from the local Huichol people, and well-appointed amenities that elevate the natural surrounding beauty with modern sophistication and comfort. Our 324 lavish rooms, suites, and villas are an effortless extension of the resort's mindful design while maintaining unique touches. Blending seamlessly with the unfettered beauty of the landscape, each stylish room boasts a private ocean-view balcony, overlooking the jewel tones of the Pacific.

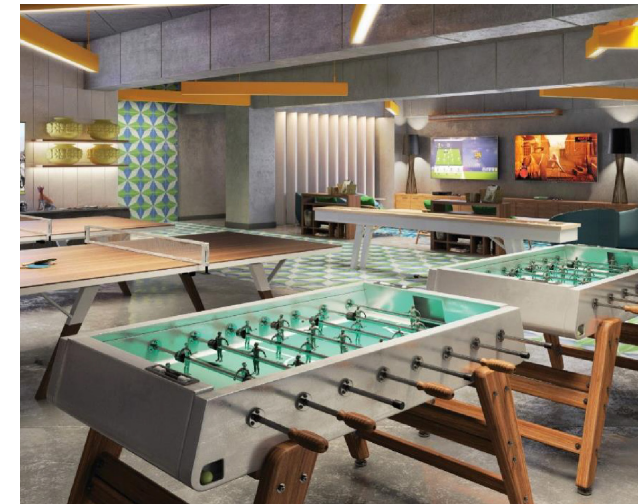


RESTAURANTS AND LOUNGES

The rich culinary heritage of the diverse Nayarit region shines with seven distinctive restaurant and bar offerings. Indulge in gastronomical experiences of every kind, including inspired local specialties steeped in timeless traditions, fresh seasonal dishes, and international interpretations with a modern flourish. Whatever you're craving during your experience—a quick morning espresso, a casual poolside lunch, or a romantic late-night aperitif—you can relish delicious cuisine among chic surroundings and stunning natural beauty. Attentive 24-hour in-room dining is also available for your privacy and convenience.

SPA

Our spa combines an enriching, expert blend of sacred healing rituals and modern technique to invigorate body and spirit in alluring indoor/outdoor settings. Try a detoxifying thermal treatment or simply relax with a fresh trim, manicure, or pedicure in the salon. For a truly unforgettable, immersive experience, a temazcal, or Mexican sweat lodge, harkens back to the purifying, curative ceremonies of ancient Mesoamericans.



SERVICES AND AMENITIES

Conrad Punta de Mita's amenities have been thoughtfully curated to ensure a relaxing, memorable stay that envelops you with a sense of calm. Listen to the gentle breeze sweep the verdant palm trees in the adult pool with cocktail in hand, or refresh and reinvigorate with some brisk laps in the energizing activity pool. Splash around with little ones in the family pool, then delight in more kid-friendly offerings such as a game room, playground, Kids Club, and full-time babysitting services. Hone your game in gorgeous scenery on the outdoor tennis and basketball courts. Pristine cardio and training equipment in our 24-hour fitness center ensure that you attain your health target. For a leisurely round in rich tropical greenery with breathtaking ocean views, enjoy our 18-hole Litibu Golf Course designed by pro golfer Greg Norman.



ACTIVITIES

Abundant land and sea excursions beckon at Conrad Punta de Mita: horseback riding, surfing, and scuba diving, among others. With breathtaking natural borders of the Pacific Ocean to the west and the Sierra Madres to the east, Riviera Nayarit offers an incredible landscape and biodiversity. Ecotourism includes sea turtle hatchlings from June to November and whale-watching tours from November to March. In nearby Sayulita and San Francisco, meaningful cultural experiences take you from passive observer to active participant in local customs and native Huichol art, each celebrating the true essence of old Mexico.





MEETINGS AND EVENTS

Plan an event to remember at Conrad Punta de Mita with versatile spaces that include tasteful meeting rooms, expansive outdoor lawns, and exclusive beachfront. Majestic settings and incredible views can add panache to any gathering, whether in our dazzling Grand Ballroom or a more intimate terrace. For that extra bit of thoughtful care, dedicated event planners can assist with every detail.



WEDDINGS

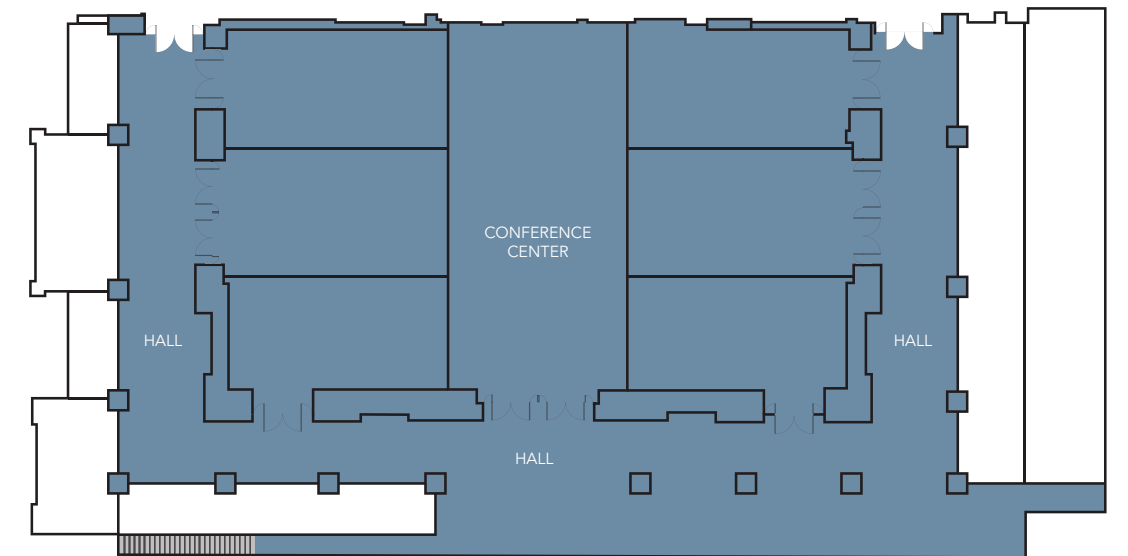
Whether you'll be newlyweds or celebrating many happy years together with a vow renewal, Conrad Punta de Mita can ensure a flawless, uniquely tailored celebration with memories that last a lifetime. Dream up a small, romantic oceanfront gathering, or imagine a magnificent reception with all your loved ones in our dazzling Grand Ballroom. Whatever your wedding style, our wedding planners can tend to every special detail, from chic décor to delicious catering.



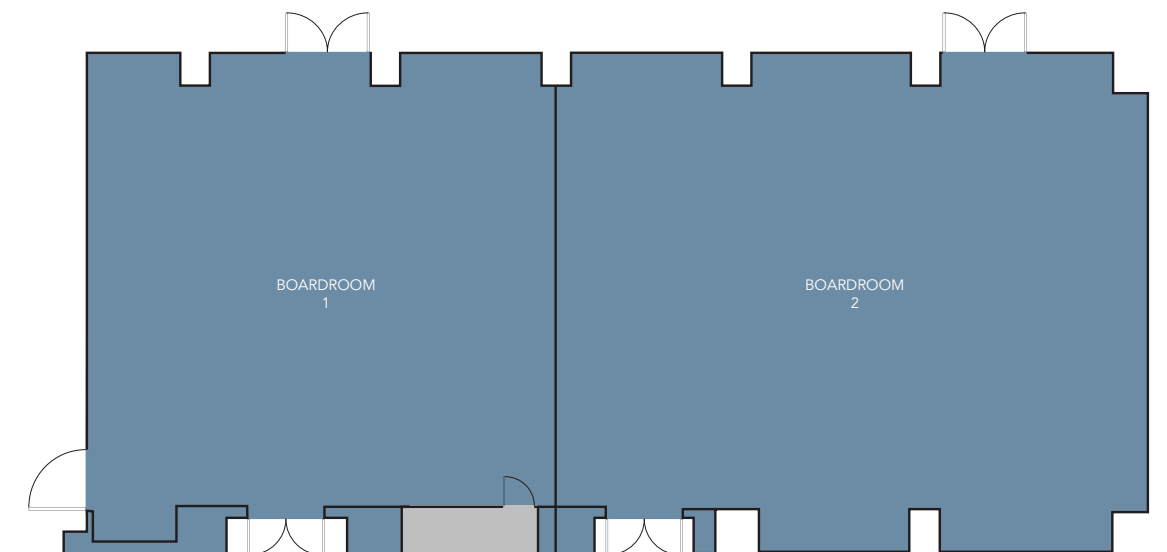


MEETING AND EVENT CAPACITY CHART											
Function Room	Total Space	Banquet Rounds 5 ft table (8)	Classroom	Board Room (Conference)	Cocktail Rounds	Hollow Square	Theater	U-Shape	10x10 exhibits	Crescent Rounds	Flow (max capacity)
XXX											
Ballrooms											
Ballroom 1	1,170	64	48	36	52	36	120	30	4	42	104
Ballroom 2	1,170	64	48	36	52	36	120	30	4	42	104
Ballroom 3	1,170	64	48	36	52	36	120	30	4	42	104
Ballroom 4	2,880	160	135	66	136	66	320	57	13	120	272
Ballroom 5	1,170	64	48	36	52	36	120	30	4	42	104
Ballroom 6	1,170	64	48	36	52	36	120	30	4	42	104
Ballroom 7	1,170	64	48	36	52	36	120	30	4	42	104
Ballroom 1 and 2	2,340	144	120	54	132	54	240	42	12	102	264
Ballroom 1, 2 and 3	3,510	224	168	72	204	72	400	60	17	168	408
Ballroom 1, 2, 3 and 4	6,390	368	336	102	376	102	720	75	31	312	752
Ballroom 1, 2, 3, 4, 5, 6 and 7	9,900	592	504	132	612	132	1120	108	48	504	1224
Meeting Room 1	1,200	90	-	-	-	-	-	-	-	-	-
Meeting Room 2	1,600	120	-	-	-	-	-	-	-	-	-
Meeting Room 1 and 2	2,800	210	-	-	-	-	-	-	-	-	-

FLOOR PLAN A



FLOOR PLAN B



CONRAD®
PUNTA DE MITA

Carretera Punta de Mita Sayulita Km 2, Litibu, Nayarit, 63734, Mexico | Tel: +52-480-250-0971 | ConradPuntadeMita.com